



# **SL620/DS-Tmini Snaplab+ Internet Configuration**

---

**Setting procedure**

---

---

## CONTENTS

Introduction .....	3
Router Update and Settings for SL-620: .....	3
What is new?.....	3
1. <i>Updating the existing NetGear N150 V4 router:</i> .....	4
2. <i>To configure internet connection</i> .....	8

---

## **INTRODUCTION**

If you have an external ADSL (internet) line, it is possible to set up the DS-Tmini to have Internet connection. Thanks to this possibility, you will benefit online update and social network images access.

By default, the SL620 is not configured to access to Internet. To allow this functionality, you have to configure the router (provided with the DS-Tmini system) and you should configure your network settings. Please follow step by step this procedure.

---

## **ROUTER UPDATE FOR SL-620 INTERNET ACCESS**

Aim to update the **Netgear N150 v4** configuration file.

---

## **WHAT IS NEW?**

After this update, the DS-Tmini can have internet connection for online software update and Instagram/Facebook images access.

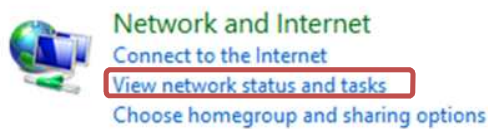
## 1. Updating the existing NetGear N150 V4 router:



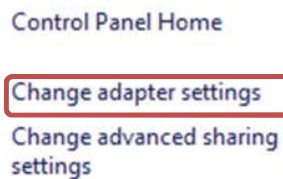
*Information: Please use the system IP Address in DHCP mode for this update*

### WINDOWS SET UP

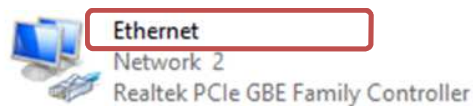
- 1) Exit from 'Photo Editing Software' (please refer the User manual).
- 2) Exit from Launchpad software.
- 3) Go to desktop and double click on 'Control Panel' icon.
- 4) In the control panel home screen, go to Network and internet and click on 'View network status and tasks'.



- 5) Click on 'Change adapter settings' on the left side of the window.



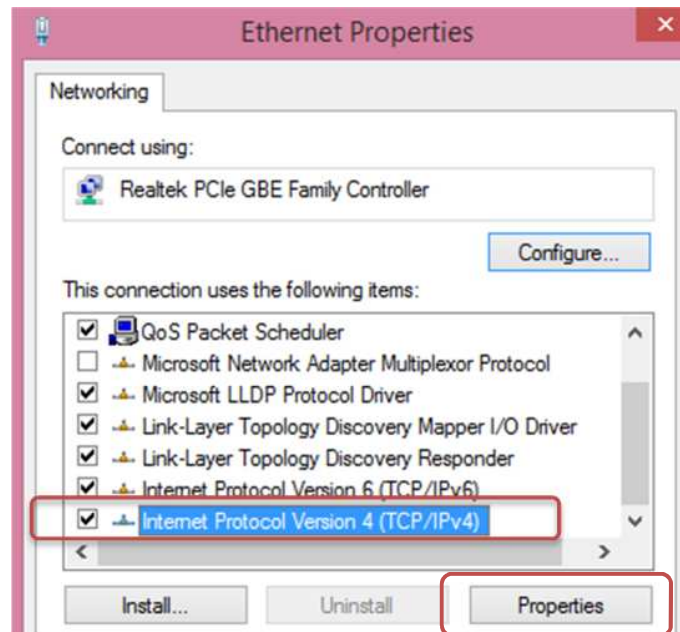
- 6) Double click on 'Ethernet'.



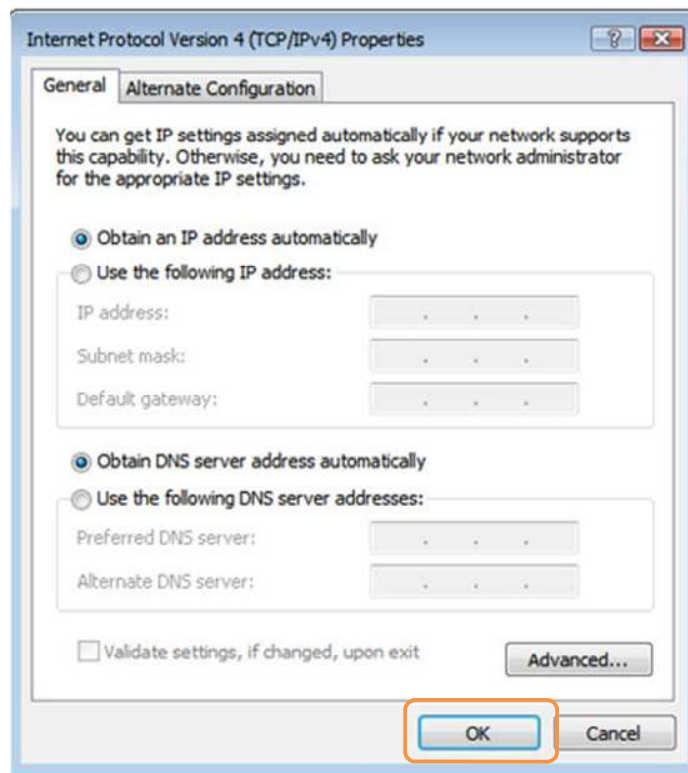
- 7) Click on 'Properties' from the Ethernet status window.



- 8) Select 'Internet Protocol Version 4' & Click on Properties.



- 9) Select **'Obtain an IP address automatically'** & **'Obtain a DNS server addresses automatically'**.



- 10) Click on "Ok".

- 11) Close all the windows.

## ROUTER SET UP

- 1) Please copy on the DS-Tmini desktop, the backup router Firmware provided with this procedure.
- 2) Please connect a keyboard to the USB port of DS-Tmini.
- 3) From Windows desktop, open an Explorer Windows (ex: My computer) and type <http://192.168.192.90> or <http://www.routerlogin.net/> in the address bar.
- 4) A window will appear, please enter the Login and Password:
  - o **Username/User-Id: admin**
  - o **Password: dnppie1600**
- 5) You are now in the router configuration page.
- 6) Please select the tab Advanced.



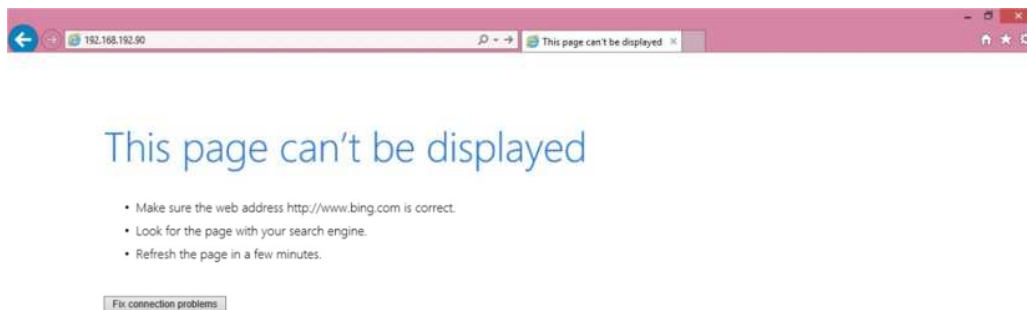
In the menu, under **Administration**, click **Backup settings**.

## SL-620: Snaplab+\_internet\_Configuration V1.1

- 7) Click on **Browse** and select the configuration file which was previously saved on your computer.



- 8) Then click **Restore** to update the settings to the router.
- 9) When the update router will be finished, a webpage error will displayed



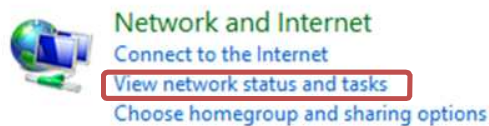
- 10) Close the browser after the update.
- 11) Follow the steps indicated in the next chapter.

## 2. To configure Internet connection

The DS-Tmini system requires specific IP address for 'Photo Prints' mobile application usage along with the Netgear router. By default DS-Tmini systems Ip address is: **192.168.192.99**

### Steps to configure the DS-Tmini system & the Netgear router with Internet connection

- 1) Go to desktop & double click on 'Control Panel' icon.
- 2) In the control panel home screen, go to Network and internet and click on 'View network status and tasks'.



- 3) Click on 'Change adapter settings' on the left side of the window.



- 4) Double click on 'Ethernet'.

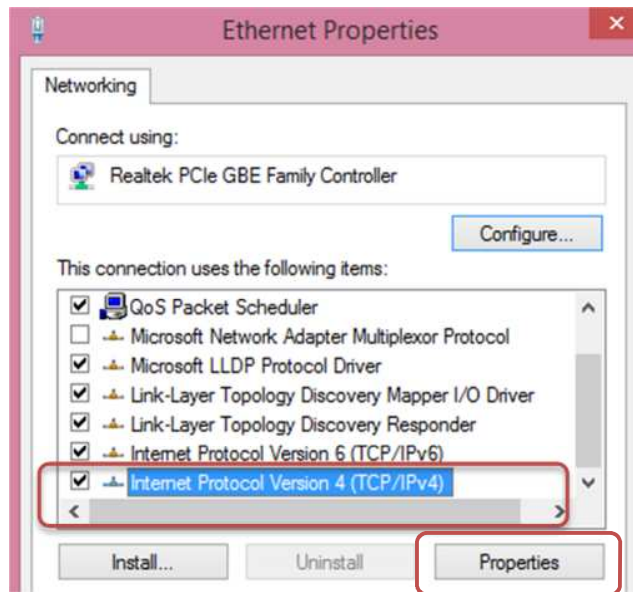


- 5) Click on 'Properties' from the Ethernet status window.

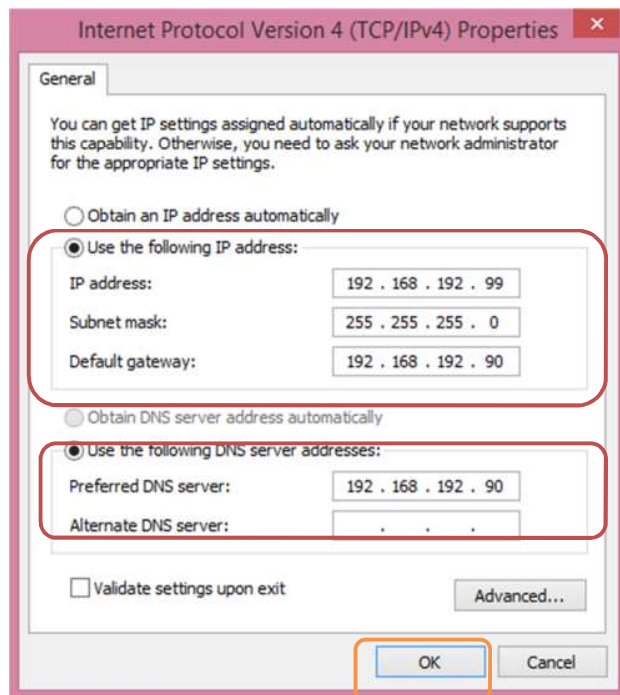


- 6) Select Internet Protocol Version 4' & Click on Properties.





- 7) Please select **Use the following IP address** and **Use the following DNS server addresses**  
**And enter the following: IP address, Subnet mask, Default gateway & Preferred DNS server**



- 8) Click on "Ok".
- 9) Close all the windows.

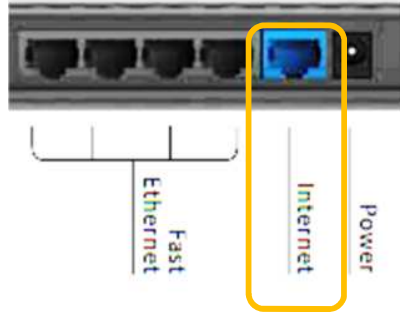


**Warning :** Do not change the IP-address settings apart from what is illustrated above.

---

10) Please connect the internet connection cable in the blue color port.

➔ Do not remove the blue network cable between the router and the system.



11) Please restart the DS-Tmini system.