



# TETENAL

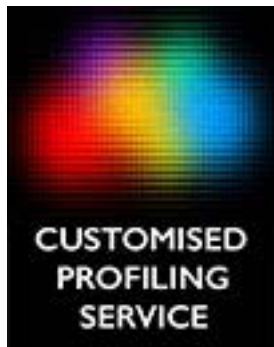
TECHNICAL SUPPORT TEAM

---

**CUSTOMISED PROFILING SERVICE**

## See true colours in print...

CUSTOM PRINTER PROFILING INSTRUCTIONS





# Using this document

Move forward through the pages of this document using the page forward and back buttons in Adobe Acrobat/ Reader. Scrolling works too but it's easy to lose your place in the order of instructions.

Zoom in and out using the + or - icons in Adobe Reader to make the images easier to see. This also allows you to check that you have followed the settings correctly as given in these instructions.

Do remember what you see on your computer screen may not be exactly what you see illustrated in these instructions, as printer and image editing software have small differences in layout and functionality, however following these step by step instructions you will be able to output/ print the Colour Patches on your printer and paper of choice.

Please take your time. It is **VERY IMPORTANT** to follow these steps to ensure you get the correct results, otherwise your profile, and the colours that you see in prints may not be accurate



# Download the Colour Patches

Download the Tetenal Colour Target Patch image 'Chart 800 Patches.tif' file from the Tetenal website at [www.tetenaluk.com/custom-profiles.html](http://www.tetenaluk.com/custom-profiles.html) - or double click the image below to open a web browser and download the file.



# Tetenal Profiling Guide

The instructions in this guide will give you step by step details on how to print the tetenal Colour Patch test chart on your printer using Photoshop. For Tetenal to be able to create optimal customised printer profiles for you to gain optimal colour reproduction using our papers and canvas on your printer you will need to follow each step closely.

Any errors made at this stage will result in poor colour reproduction.

After successfully printing the Colour Patch Target charts (one for each paper type) and returning them to Tetenal, we will produce a unique ICC Profile for your specific printer, ink, and paper selection combination.

Please note: This process has been created for printing directly through your printer only, and NOT through any Raster Image Processors (RIP's)

Select 'File', then 'Open' again from the menu bar at the top of Photoshop. Navigate to where you have saved the Colour Patch chart (That you have downloaded from our website at [www.tetenaluk.com/custom-profiles.html](http://www.tetenaluk.com/custom-profiles.html)).



# Adobe Colour Print Utility

**IMPORTANT:** This Adobe application can be used by all Adobe software version users, however it **MUST BE USED TO CREATE COLOUR TARGET PATCH PRINTS** for Adobe CS4, CS5, CS6, Lightroom 4 and Aperture users.

This free software can be downloaded from the [Adobe website here](#)

Please ensure you download the correct version for your computer selecting either the PC or Mac software zip file.

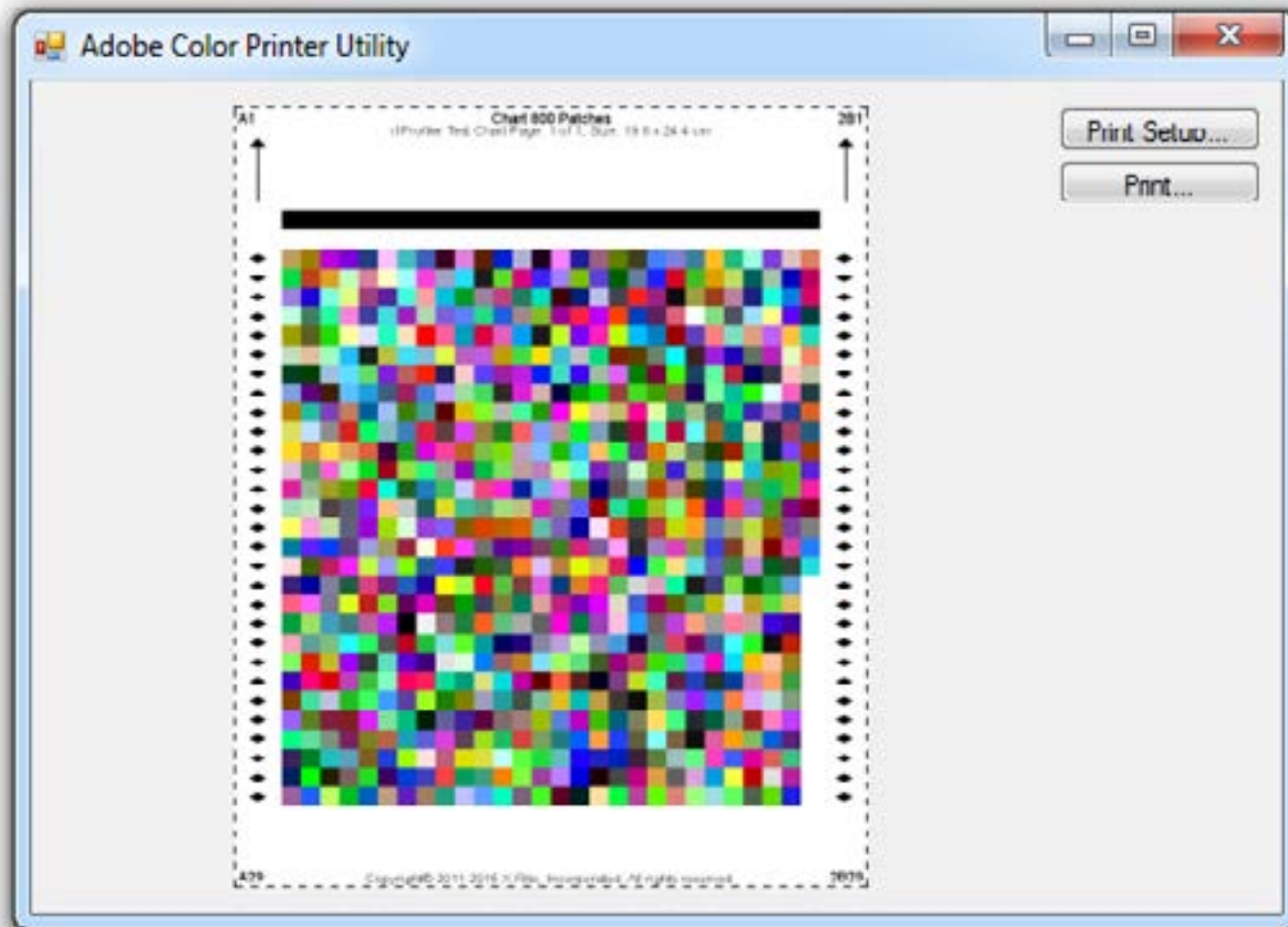
## Instructions

Once you have extracted the contents of the downloaded ZIP file and saved the Adobe Colour Print Utility to a folder on your computer (following the install instructions on the Adobe website) run the Utility by double-clicking the Adobe Color Printer Utility Exe file to open the application.



# Adobe Colour Print Utility

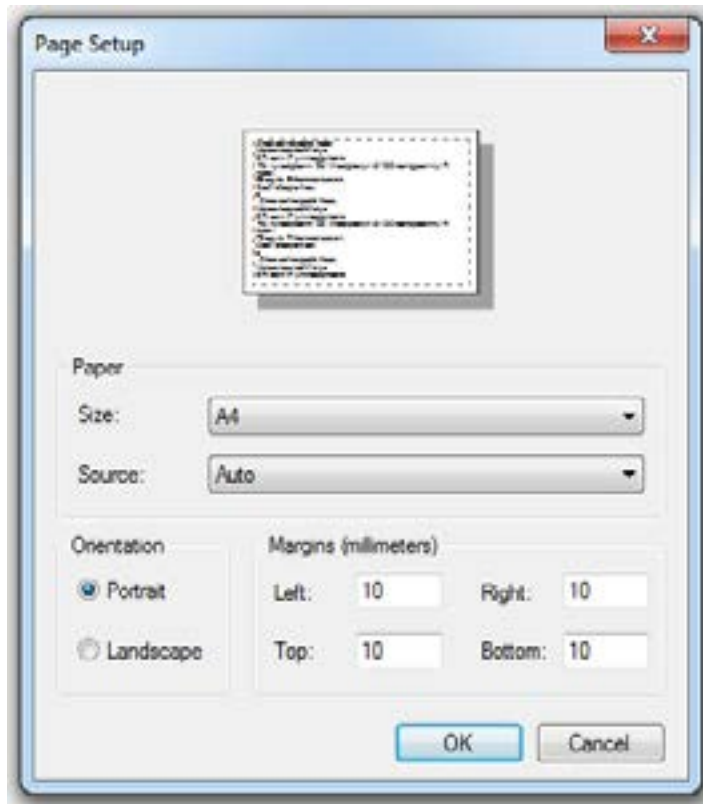
When you see the request to 'Open a Tiff file' please open the first Colour Target Patch named 'Chart 800 Patches.tif' from the location you have previously downloaded it to.



# Adobe Colour Print Utility

Then select 'Print Setup' in the Utility AND VERY IMPORTANT: ENSURE THE PAGE SIZE IS SET TO A4 AND PORTRAIT ORIENTATION

Now click the 'Print' button, choose the correct printer for your profiling and click 'Properties' to apply the same printer driver property settings as before:



In the printer driver settings select the media/ paper type that is the most similar to the paper you are using.

You may want to try the various media/ paper types to see what gives the best results before the profiling process, as this will ensure you get the very best results when using your Customised Printer Profile.



# Adobe Colour Print Utility

Click 'OK' to send your Colour Target Patch file to your printer.

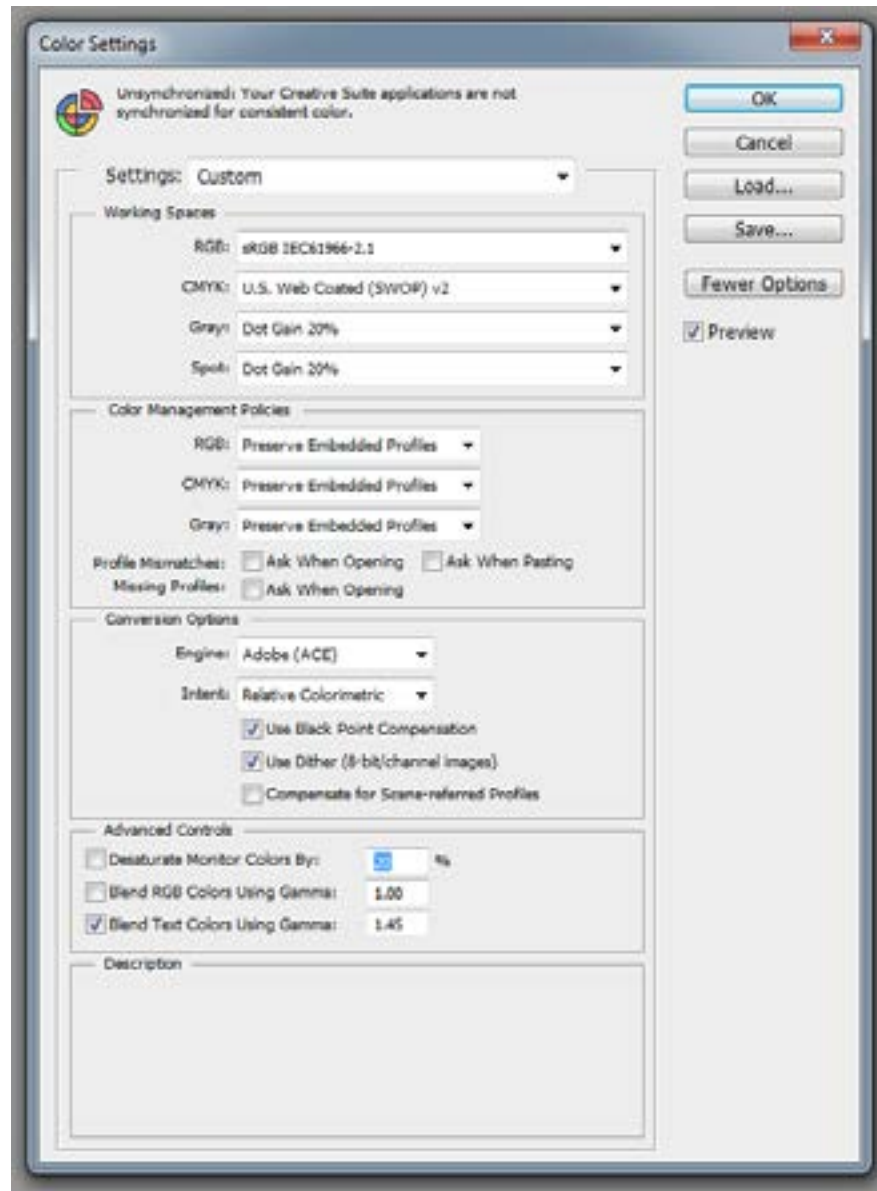
Go to page 17 of this document for details of how to send your printed Colour Target Patch paper prints back to Tetenal.

Remember if you are requiring printer profiles for use with any of the Tetenal Spectrajet paper range, your custom profile(s) will be provided absolutely **FREE OF CHARGE!**



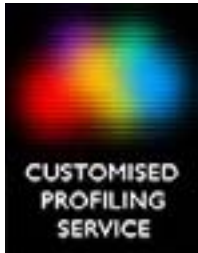
# I: Opening the Color Patch Charts

In Photoshop, from the top menu bar, select 'Edit', then select 'Color Settings'

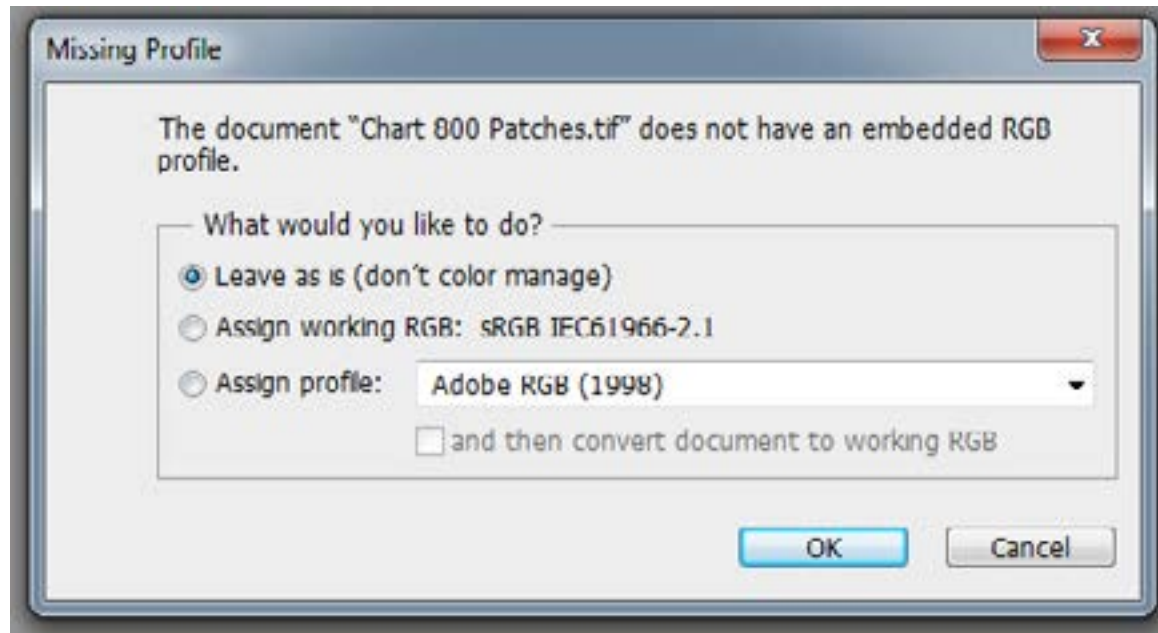


Copy all the settings as per the image (on left).

Check to ensure these all match your settings **EXACTLY.**



Select 'File', then 'Open' again from the menu bar at the top of Photoshop. Navigate to where you have saved the Colour Patch charts (That you have downloaded from the Tetenal website at [www.tetenaluk.com/custom-profiles.html](http://www.tetenaluk.com/custom-profiles.html)) and open the Colour Patch Test chart (Chart 800 Patches.tif)



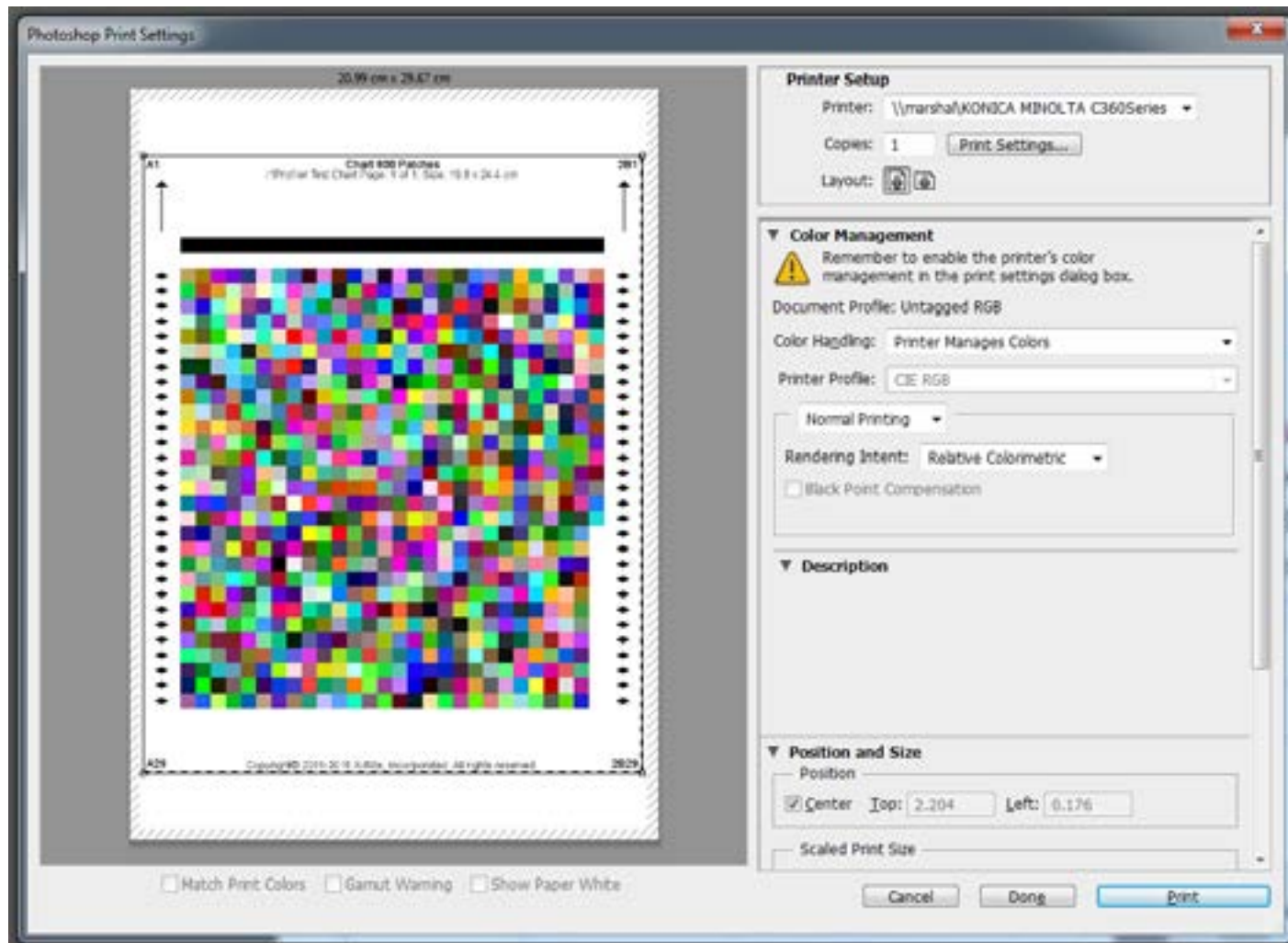
You will see a warning message pop up box notifying you that the RGB image is 'does not have an embedded RGB profile' (See image of missing profile warning left)

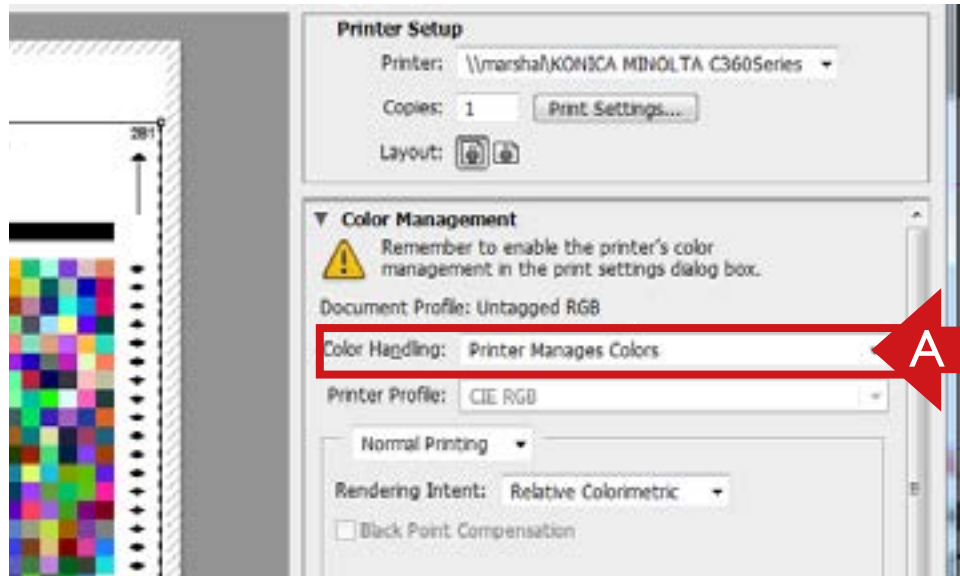
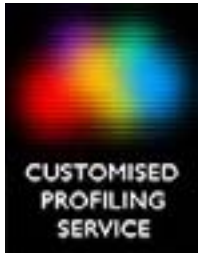
NOTE: BEFORE YOU SELECT 'OK' IT IS **VERY IMPORTANT** THAT THE FIRST OPTION 'LEAVE AS IS (DON'T COLOUR MANAGE)' HAS BEEN SELECTED.



# Photoshop CS6 or later

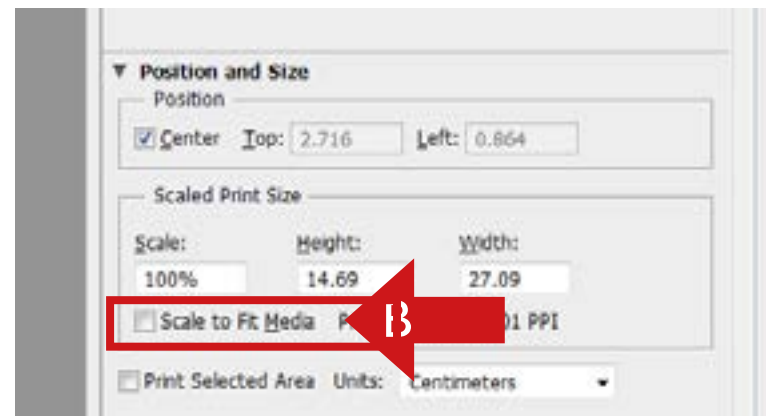
In the top menu go to 'File' and then select 'Print'. You should now see a screen in Photoshop that looks similar to this image below.





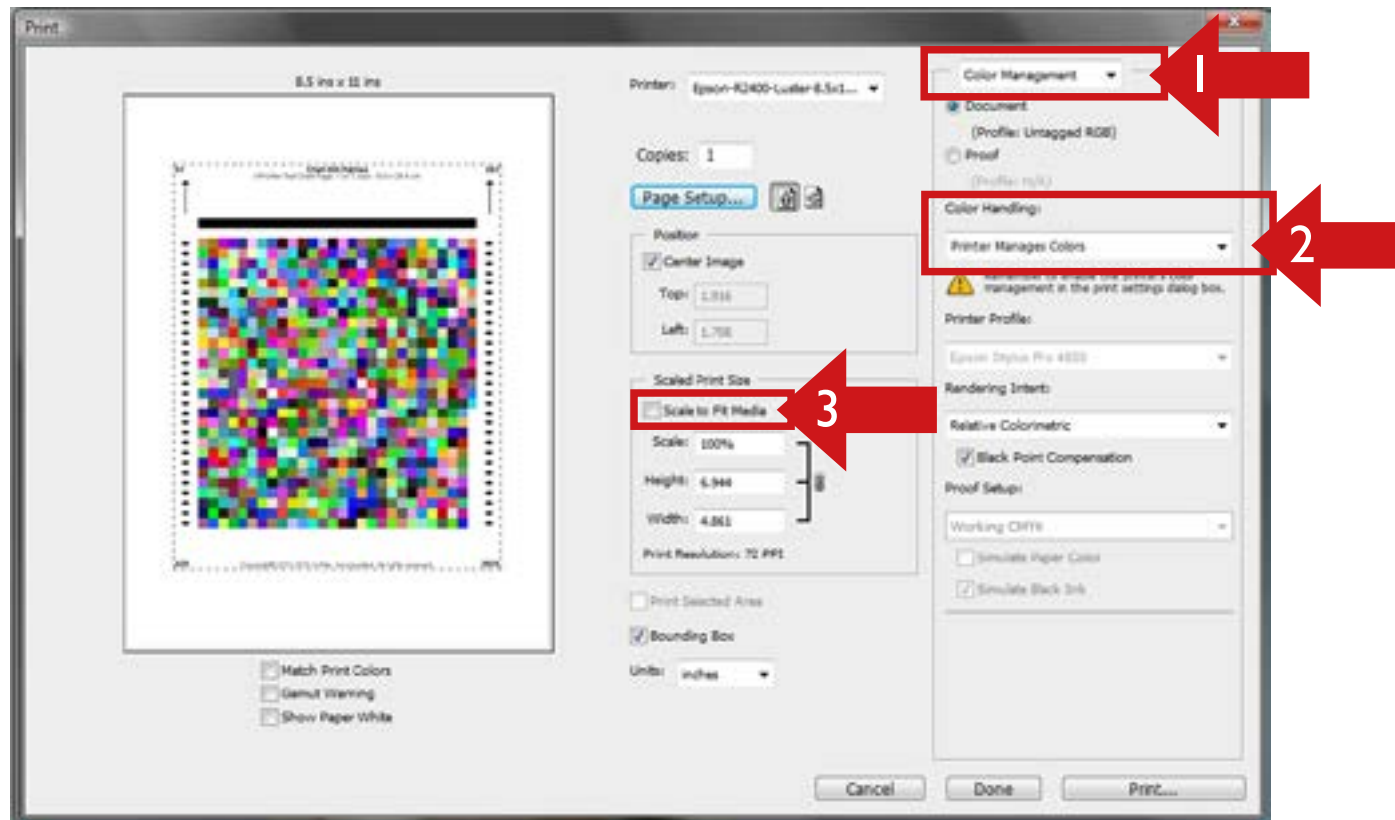
A, Make sure the 'Color Handling' option under 'Color Management' is set to 'Printer Manages Colors'

B, Ensure you DO NOT 'Scale to fit media' (untick this) under the 'Position and Size Panel' in the 'Scaled Print Size'



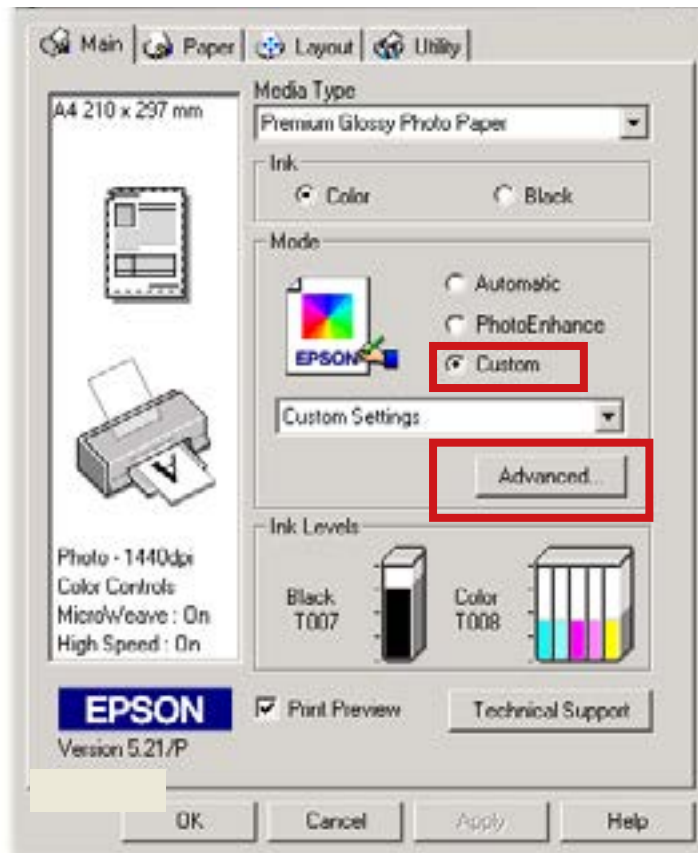
# Photoshop CS5 or earlier

- 1, If using Photoshop CS5 or earlier check that the top right drop down menu is set to 'Color Management' and NOT 'Output'.
- 2, Make sure the 'Color Handling' option is set to 'Printer Manages Colors'
- 3, Ensure you DO NOT 'Scale to fit media' under the 'Position and Size Panel' in the 'Scaled Print Size'



# 2, Turn off colour management Epson Printers

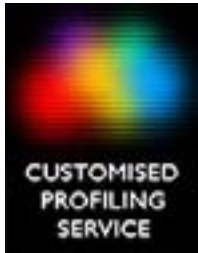
Click on 'Print Settings' button in Photoshop to open the relevant settings for your default/ chosen printer. You should see a pop up settings panel that is similar to the image below.



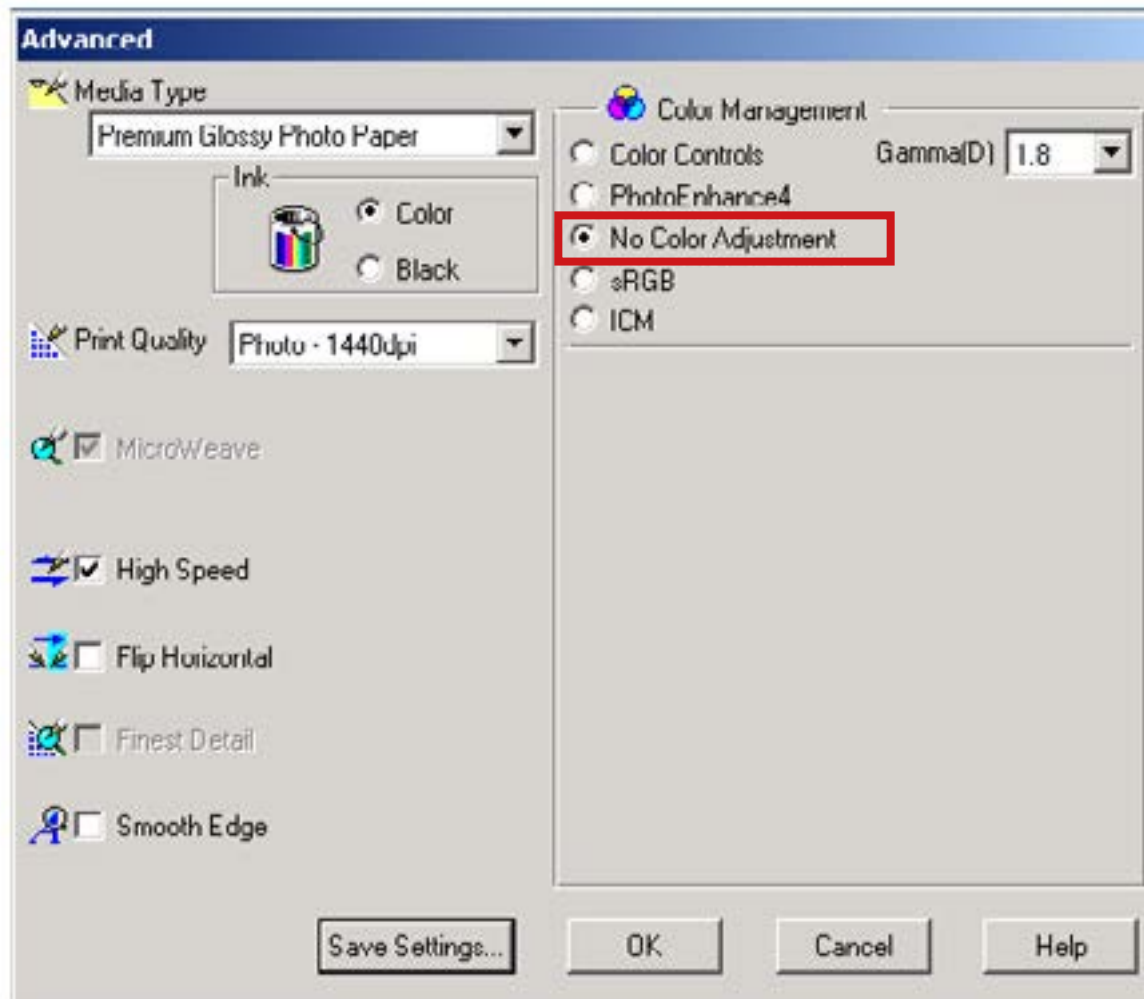
In the 'Mode' settings, choose 'Custom' for these settings.

Click the 'Advanced' button to open the following Pop Up settings panel...





# Epson Printers



In the 'Printer Color Management' section of this panel, choose the 'No Color Adjustment' option to turn off any colour changes being made to your image.

Then click 'OK' to save your settings.



# Final steps...

Lastly choose your media/ paper type, in the main screen of the printer settings, select the correct media/ paper type to match the paper you are wanting Tetenal to create the profile for.

Make sure your page 'Orientation' is set to 'Portrait'.

Then simply select 'Print' to create your first Colour Target Patch print, repeat this procedure again for any of the other papers you wish to have colour profiles created for.

Then the printed Colour Chart printed patches, one for each of the paper type/ finishes you require, can now be sent to us. See the next page for details...

**Remember if you are requiring printer profiles for use with any of the Tetenal SpectraJet paper range, your custom profile(s) will be provided absolutely FREE OF CHARGE!**





# Sending your printed patches

Before sending Tetenal your printed Target Patches (on your paper/s of choice) please wait until they are COMPLETELY DRY, usually 2- 3 hours to be sure, before placing them together in an envelope.

**DO NOT FOLD OR WRITE ON THE PRINTED SIDE OF THE PAPER TARGET PATCH PRINTOUTS.**

**ALSO PLEASE DO NOT CUT DOWN OR CUT INTO ANY OF THE AREAS OF THE COLOUR TARGET PATCHES ON THE A4 PRINTED PAPER SHEET.**

Place the patches together with a completed order form (on the last page of this document) in a suitable **STIFF BACKED ENVELOPE** and post it to-

Tetenal Profiling Service Dept.  
2 Meridian West,  
Meridian Business Park,  
Leicester  
LE19 1WX



# Receiving your ICC profiles...

Your profile/s will be emailed to the email address you have supplied on the order form (on the last page of these instructions), normally within 48 hours\* of Tetenal receiving the printed patches. (\*not including weekends/ public holidays)

Please be aware that sometimes these ICC printer profiles can be over 1mb in file size, so ensure you can receive large email attachments on the email address supplied to us.

**PLEASE NOTE: DO NOT RENAME ANY OF THE RECEIVED PROFILE FILES AS IT WILL CAUSE CORRUPTION AND MAKE THEM UNUSABLE.**



# Install your new ICC profiles...

Firstly always make a copy/ save your profiles to a safe location on your computer CDR/ memory stick for future use.

When you receive your profiles they need to be SAVED (NOT opened) into a specific directory or folder to be recognised by all your applications that use ICC profiles for print.

On most PC systems this is done simply by right clicking on the ICC profile files (that you have saved to a safe location from your email attachments) and selecting 'Install Profile' from the drop down menu.

For other/ earlier Windows operating systems the files should be copied in the folder located at-

Windows 2000: C:\WinNT\System32\Spool\Drivers\Color

Windows XP: C:\Windows\System32\Spool\Drivers\Color

Windows Vista 7: C;\Windows\System32\Spool\Drivers\Color



# Install your new ICC profiles...

Apple Mac users are required to drag/ copy the profile files to these folders, remembering that any applications will require restarting to enable the software to use the profile when printing.

On a MAC these folders are located at-

Mac OSX: /library/colorsync/profiles

Mac OS9: System folder/Colorsync Profiles

**NOW CLOSE AND RESTART ALL OF YOUR PHOTO/ IMAGE APPLICATIONS**



# Using your new ICC profile...

You can use your new ICC printer profile by following these instructions-

1. Select the printer and page size in the 'Page Setup' settings panel as per normal.
2. Select 'Print with Preview' or 'Print' (in later versions of Photoshop) from the 'File' menu to enter the printer output settings panel.
3. Set 'Let Photoshop Manage/ Determine Colours'
4. Select your new printer profile by name under 'Printer Profile'
5. Use the same custom settings in the printer driver options as you did for printing/ outputting the original Colour Profile Target Patch prints.
6. Remember these custom printer profiles will only improve the colour accuracy of your prints IF you use EXACTLY the same paper, ink and printer driver options that you used to print each of the matching Colour targets you sent to Tetenal to create your files from.

# Tetenal Customised profiling service

Your details:

Name: .....

Business Name.....

Tetenal Acc No.....

Address: .....

.....

.....

Phone: .....

Email address (to receive profiles by. Note may be bigger than 1mb+)

.....

Complete all details on right



Send to:

Tetenal Profiling Service Dept.  
2 Meridian West,  
Meridian Business Park,  
Leicester LE19 1WX

Full Profiling details: One for each profile required.

Operating System: .....

Image software/Version.....

.....

1.Printer Model:.....

Ink Manufacturer: .....

Paper Type: .....

Media Setting Selected: .....

.....

2.Printer Model:.....

Ink Manufacturer: .....

Paper Type: .....

Media Setting Selected: .....

.....

3.Printer Model:.....

Ink Manufacturer: .....

Paper Type: .....

Media Setting Selected: .....

.....

Terms & Conditions:

1. Failure to follow the instructions contained in this PDF may result in an inaccurate profile. Tetenal cannot be held responsible for any such inaccuracy.
2. All colour matches between devices are subject to gamut, consistency and capabilities of the hardware or software involved and the lighting conditions that the results are viewed under.
3. Changes to device settings, media, inks or failure to maintain the device may invalidate any profiles created by Tetenal.
4. Tetenal cannot be held responsible for the failure of any third party software to accurately implement any ICC profile created.
5. Tetenal cannot be held responsible for any consequential losses due to the use of any profiles created by Tetenal. The customer is responsible for the evaluation and testing.

Signature & Confirmation:

I agree to the terms and conditions stated on this form and have read and understood the instructions for outputting colour patches.

Signed: .....

Date: .....